

# MODEL 21-80



## Special Application Pool Pump

The Speck Model 21-80 is a high efficiency, plastic pool pump. The 21-80 is ideally suited for commercial vacuum and sand filters, hydrotherapy, swim spas, waterfalls, water slides and vanishing edge pool applications. The pump design provides maximum flow at low head and is available in two versions: flooded suction or self-priming.

### features

- This high performance pump comes complete with our unique mechanical shaft seal that allows the pump, if mistreated, to run dry for up to one hour.
- Pump parts are made of glass reinforced plastic. Non-corrosive, chemical/UV resistant, and can withstand temperatures of up to 175° F.
- Heavy duty "1081" E-plus®/extreme-E™ energy efficient pool motors with large 56 frame motor is thermally protected (no motor starter required). PSC switchless design and extra large sealed ball bearings.
- For pool users' safety, the impeller has a dielectric shaft sleeve that provides absolute separation between pool water and electric parts.
- All pumps are equipped with 4" quick disconnect unions.
- Three/Two year warranty on the motor and all pump parts, including normal wear of the mechanical seal.
- Motor is easy to remove without disturbing the plumbing. Reusable o-rings throughout.
- Every pump is performance tested before leaving the Speck factory.



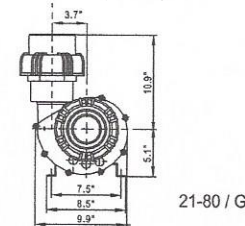
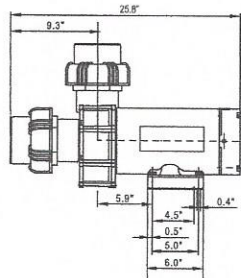
Model 21-80/ G



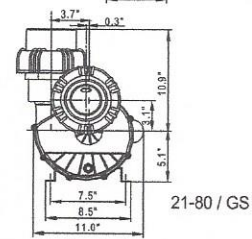
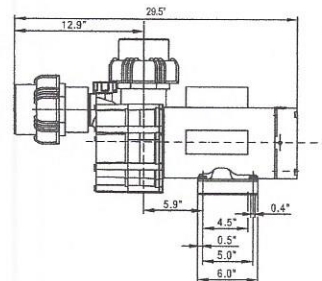
Three phase models and 6 HP, single phase models are not UL Listed



Model 21-80/ GS

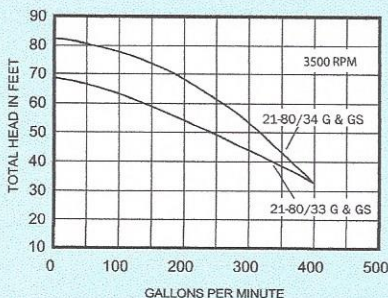


Flooded suction



Self-priming  
(up to 4 feet)

### MODEL 21-80 PERFORMANCE CURVE

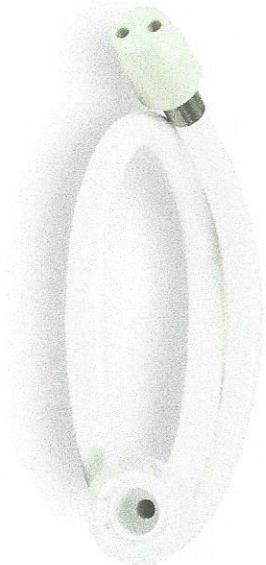
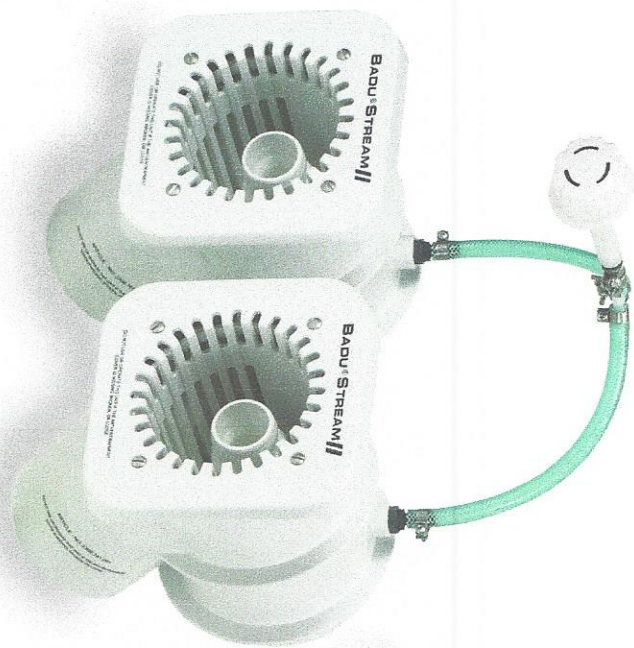


### MODEL 21-80 TECHNICAL DATA

MODEL	HP	S.F.	VOLTS	PIPE SIZE	SHIPPING WEIGHT
21-80/33 G	4	1.25	208-230	4"	71 lbs.
21-80/33 GS	4	1.25	208-230	4"	71 lbs.
21-80/34 G	6	1.00	208-230	4"	76 lbs.
21-80/34 GS	6	1.00	208-230	4"	77 lbs.

Also available in 3 phase 50 and 60 Hz.  
6 HP, 3 phase motors are not thermally protected.







72-SOUTH VEGAS-SCP DIST.  
 1427 HELM DR  
 LAS VEGAS, NV 89119-3805  
 Phone 702-450-9300  
 Fax 702-450-9519

# Quotation

QUOTE #	72022439
LOCATION	72
DATE	12/23/14
PAGE	1 of 1

**BILL TO**

212448  
 GREENCARE  
 6807 W. GARY  
 LAS VEGAS, NV 89139  
 Phone 702-839-5296  
 Fax 702-577-0799

**SHIP TO**

GREENCARE  
 6807 W. GARY  
 LAS VEGAS, NV 89139  
 Fax 702-577-0799

QUOTE DATE 12/23/14	EXPIRE DATE 01/22/15	REQUIRED DATE	REFERENCE NUMBER BADU	PAYMENT TERMS NET 30 DAYS
WRITTEN BY S STACIE HODES(72)			CONTACT JONNETT	SHIP VIA
FREIGHT TERMS OUTBOUND		JOB NUMBER		SALES REP 44 /

PRODUCT/DESCRIPTION	QUANTITY	PRICE	U/M	EXTENSION
SPK-10-2225 2308000042B BADUSTREAM II (2)W4HP GFCI+CP W/ROUND COVERS THIS COMES WITH 2-JEST HOUSINGS 1-4HP PUMP 21-80/33GS PUMP CONTROL BOX 350-400 GPM THIS HAS TO BE ORDERED	1	2,602.02	EA	2,602.02

*\$3657<sup>00</sup>*

MERCHANDISE TOTAL	HANDLING	MISC CHARGE	TAX	FREIGHT	QUOTE TOTAL
2,602.02	0.00	0.00	210.76	0.00	2,812.78

Per Jonnett.MUST CALL her @ 702-205-0901

Accepted:

By: \_\_\_\_\_  
 Date: \_\_\_\_\_